



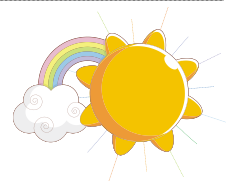
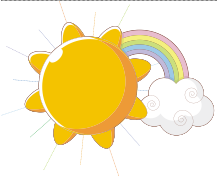
Stoke by Nayland Church of England Primary School and Early Years Setting



School Street Stoke by Nayland Colchester CO6 4QY

Headteacher: Mrs Jane Le Grice B.Ed, NPQH
Telephone: (01206) 262418

e-mail: ad.stokebynayland.p@talk21.com
www.stokebynaylandprimaryschool.org.uk



22nd February 2018

Saplings Class Weekly Themes and 'Show and Tell'.

Please find below a new set of themes and dates for our 'Show and Tell' sessions this half term. We will be finding out about growing and keeping healthy throughout this half term.

Please could you also continue to hear your child read and support them with learning their spellings.

Date In:	Theme of the week:	Possible Show and Tell:
2.03.18	Who was Florence Nightingale? / What do nurses do?	<ul style="list-style-type: none"> • What job did she do? • What do nurses do? • How did she help people? • Pictures or drawings • Information you can share from the internet.
9.03.18	What do you know about plants?	<ul style="list-style-type: none"> • Drawings of plants in your garden. • Information you can share from the internet. • Photographs from walks or from your garden • Seeds you have sown
16.03.18	What do plants need to grow?	<ul style="list-style-type: none"> • Drawings of plants in your garden. • Information you can share from the internet. • Photographs from walks or from your garden • Seeds you have sown
23.03.18	Art from plants and flowers	We would love to see any leaf printing, flower pressing, drawings or paintings you have done at home. We would like to see them and display them in class.

Yours sincerely,

S Andrews

Mrs S Andrews
Saplings Class teacher