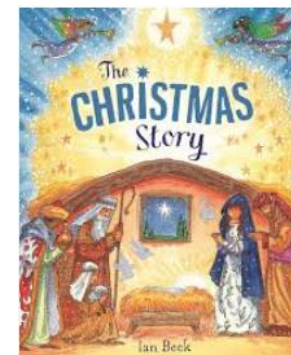
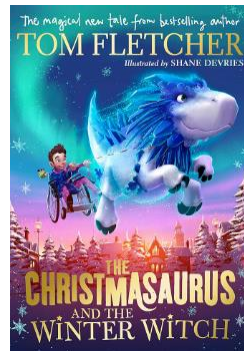


Oak class Medium Term Plan Autumn Term 2 2024



English

Oak class will start the second half of the Autumn term continuing our exploration of 'Cloud Busting'. We have so much more to delve into, we will be exploring the vocabulary and why the author chose particular words, we will also be inferring and questioning parts of the book. From this, we will be writing diary entries, persuasive writing, our own plays and non-chronological reports. We will be ending the term by reading the Christmas story and basing our own writing on this.

Maths

We will be starting our maths this half term by looking at Fractions. We will be working more on equivalent fractions and how unit fractions can be expressed in other forms. We will be using a variety of representations, including fractions of shapes, number lines and fraction walls as well as the abstract form. We will then move onto problem solving and investigations.

Science

Year 5 and 6 will focusing on Forces

explain that unsupported objects fall towards the Earth because of the force of gravity acting between the Earth and the falling object ♣ identify the effects of air resistance, water resistance and friction, that act between moving surfaces ♣ recognise that some mechanisms, including levers, pulleys and gears, allow a smaller force to have a greater effect..

Computing

Our Computing unit this half term is 3D Modelling. We will find out about how a computer creates and manipulates 3D objects. We will also explore the important of positioning and why we might place an object somewhere. We will end the term by planning and creating our own 3D model.

History

We will become historians and explore the 'Stone Age to Iron Age' and the dramatic changes that happened through prehistoric times. We will explore how hunter-gatherers survived and will compare the lives of hunter-gatherers to the way people lived at the end of the Stone Age in permanent settlements.

We will consider the evidence found at the Neolithic village of Skara Brae and about the evidence that has been gathered from the world-famous Stonehenge.

RE

Islam How does tawhid create a sense of belonging to the Muslim community?

We will be considering community and a sense of belonging and how this impacts on the Islamic religion.

DT

Textiles – Waistcoats
We will be designing and creating our own waistcoats.

PE

This half term we continue swimming. We focus on swimming confidence and effective strokes.

PHSE

Respecting Ourselves and Others
Responding to hurtful behaviour
managing confidentiality
Recognising and managing pressure; consent in different situations